



Costruzione

LVG: 1) Corpo pompa in ghisa G25, 2) Camicia, coperchio, manico, tiranti e girante in acciaio inox AISI 304.

LDG: 1) Corpo pompa: ghisa G25 (LDG-11), plastica nylon caricata fibra di vetro (LDG-04/07), griglia-diffusore in plastica nylon caricata fibra di vetro, 2) Camicia, coperchio, manico, tiranti e girante in acciaio inox AISI 304.

LVX: 1) Corpo pompa, piedino, girante, camicia, coperchio, manico e tiranti in acciaio inox aisi 304.

Caratteristiche comuni

3) Motore a bagno di liquido refrigerante dielettrico non inquinante.

Moto protettore termico incorporato versione monofase.

Classe isolamento F.

4) Albero motore in acciaio AISI 420.

5) Tenuta lato motore in Grafite-Allumina (su richiesta in Silicio-Allumina).

Protezione lato pompa parasabbia.

A richiesta senza galleggiante per funzionamento manuale.



Constructions

LVG: 1) Corps de pompe en fonte G25, 2) Chemise, couvercle, poignée, turbine et tirants en acier inox AISI 304.

LDG: 1) Corps de pompe: fonte G25 (LDG-11), plastique nylon charge avec fibre de verre (LDG-04/07), crépine-diffuseur en plastique nylon charge avec fibre de verre, 2) Chemise, couvercle, poignée, turbine et tirants en acier inox AISI 304.

LVX: 1) Corps de pompe, pied support, turbine, chemise, couvercle, poignée et tirants en acier inox aisi 304.

Caractéristiques techniques

3) Moteur à bain d'huile diélectrique réfrigérante, selon IEC normes. Protection thermique incorporée pour les versions monophasées.

Classe d'isolation F.

4) Arbre moteur en acier AISI420.

5) Garniture mécanique en Carbone-Graphite (coté moteur), sur demande en Carbone-Silicium.

Coté pompe: tenue de protection contre le sable.

Sur demande en monophasé, version sans flotteur incorporé.



Características constructivas

LVG: 1) Cuerpo bomba en fundición G25, 2) Camisa exterior, soporte superior, asa transporte, tirantes y impulsor en acero inox AISI 304.

LDG: 1) Cuerpo bomba: fundición G25 (LDG-11), plástico nylon con carga de fibra de vidrio (LDG-04/07), rejilla-difusor en plástico nylon con carga de fibra de vidrio, 2) Camisa exterior, soporte superior, asa transporte, tirantes y impulsor en acero inox AISI 304.

LVX: 1) Cuerpo bomba, pie de apoyo, impulsor, camisa exterior, soporte superior, asa transporte y tirantes en acero inox AISI 304.

Características en comunes

3) Motor en baño de líquido refrigerante dieléctrico no contaminador.

Motoprotector termo-amperométrico incorporado versión monofásico.

Aislamiento clase F.

4) Eje motor en acero Aisi 420.

5) Cierre macánico lado motor en Grafito Allumina, (sobre pedido en Silicio Allumina).

Protección lado bomba guardarena.

Sobre pedido sin boya para funcionamiento manual.



Construction

LVG: 1) Pump body in cast iron G25, 2) Motor case, upper cover, tie-rods, grip and impeller in stainless steel AISI 304.

LDG: 1) Pump body: cast iron G25 (LDG-11), nylon plastic reinforced with fiber glass (LDG-04/07), grill diffuser is in nylon plastic reinforced with fiber glass, 2) Motor case, upper cover, tie-rods, grip and impeller in stainless steel AISI 304.

LVX: 1) Pump body, support feet impeller, motor case, upper cover, tie-rods, grip in stainless steel 304.

General characteristics

3) Motor in liquid refrigerant bath, dielectric, not defiler.

Thermal protection switch incorporated in all single-phases motors.

Class F insulation.

4) Motor shaft in steel mod. AISI 420.

5) Seal on motor side is in Graphite Alumina (by request in Silicon-Alumina).

Protection on pump side is a ring anti sand.

By request without float switch for manual working.



Konstruktion

LVG: 1) Pumpengehäuse aus Grauguss G25, 2) Motorgehäuse, Deckel, Bolzen, Griff und Laufrad aus Edelstahl AISI 304.

LDG: 1) Pumpengehäuse: Grauguss G25 (LDG-11), glasfaserverstärktem Nylon (LDG-04/07), Bodensieb aus glasfaserverstärktem Nylon, 2) Motorgehäuse, Deckel, Bolzen, Griff und Laufrad aus Edelstahl AISI 304.

LVX: 1) Pumpengehäuse, Bodenstützring, Motorgehäuse, Deckel, Bolzen und Griff aus Edelstahl AISI 304.

Generelle Eigenschaften

3) Motorkühlung durch dielektrische und ökologisch unbedenkliche Kühlfüssigkeit Eingebauter Thermoschutz bei allen Wechselstrommotoren. Isolationsklasse F.

4) Motorwelle aus AISI 420

5) Wellenabdichtung durch Gleitringdichtung Kohle/Keramik (auf Anfrage Siliziumkarbid) mit zusätzlichem Dichtring als Sandschutz auf der Pumpenseite.

Auf Anfrage auch ohne Schwimmerschalter für manuellen Betrieb lieferbar.



Конструкция

LVG: 1) Корпус насоса из чугуна G25, 2) Рубашка, крышка, ручка, резьбовые шпильки и рабочее колесо из нержавеющей стали AISI 304.

LDG: 1) Корпус насоса: чугун G25 (LDG-11), нейлон со стекловолокном (LDG-04/07), сетка-диффузор из нейлон со стекловолокном, 2) Рубашка, крышка, ручка, резьбовые шпильки и рабочее колесо из нержавеющей стали AISI 304.

LVX: 1) Корпус насоса, ножка, рабочее колесо, рубашка, крышка, ручка и резьбовые шпильки из нержавеющей стали AISI 304.

Общие характеристики

3) Двигатель с экологически чистой диэлектрической жидкостью для охлаждения.

Термозащита встроена в однофазном варианте.

Класс изоляции F.

4) Вал двигателя из стали AISI 420.

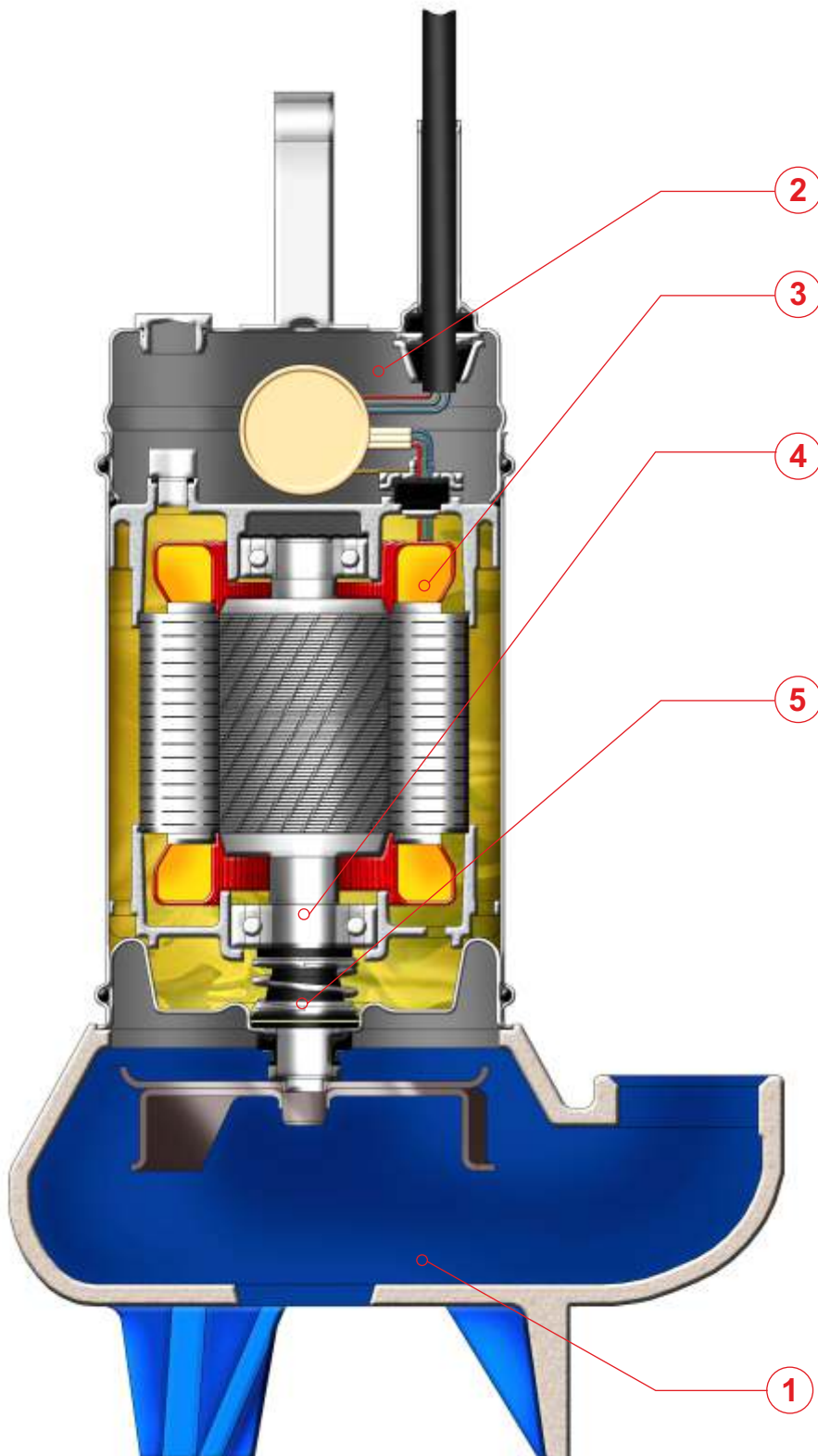
5) Уплотнение со стороны двигателя из графита-оксида алюминия (под заказ из кремния-оксида алюминия).

Защита от песка со стороны насоса.

Под заказ - без поплавка для ручного режима.

LIGHT

Elettropompe sommergibili serie light
Submersible electric pumps light series
Electropompe submersible série light
Tauchmotorpumpe light Series
Bombas sumergibles serie light
Погружные электронасосы серии Light



**IMPIEGHI****LVG:**

Particolarmente indicata per rimuovere acque luride con corpi in sospensione, per il sollevamento di acque fognarie, piovane, fanghi biologici e acque reflue di origine industriale.

LDG:

Particolarmente indicata per prosciugare acque piovane, cantine, seminterrati, sottopassaggi, serbatoi etc.

LVX:

Particolarmente indicata per rimuovere acque luride anche con corpi in sospensione grazie a una girante del tipo aperta arretrata.

**APPLICATIONS****LVG:**

Particulièrement indiquée pour le relevage, des eaux chargées de particules en suspension, des eaux de pluie, de sortie de fosses de traitement, ou des eaux industrielles.

LDG:

Particulièrement indiquée pour le relevage des eaux claires (eaux de drainage, piscines, infiltrations, vide-caves).

LVX:

Particulièrement indiquée pour le relevage, des eaux usées chargées (WC ; Fosses septiques, vidanges etc...) grâce à la turbine ouverte et positionnée en recul de la chambre de pompage.

**UTILIZACION****LVG:**

Particolarmente indicada para remover aguas fecales con cuerpos en suspensión, para el elevamento de aguas residuales (alcantarilla), aguas pluviales, langos biológicos y aguas residuales de origen industrial.

LDG:

Particolarmente idonea para evacuación de aguas de infiltraciones, sótanos, garajes, piscinas, fuentes, eslanques, etc.

LVX:

Particolarmente idónea para evacuación de aguas sucias también con sólidos en suspensión gracias a un impulsor desplazado.

**APPLICATION****LVG:**

Proper for pumping of dirty water, screened sewage, rain and waste water with suspended solids for industrial plants.

LDG:

Proper for draining rain waters, flooded cellars, subways and tanks.

LVX:

Proper for special sewage pumping applications, supplied with open impeller.

**EINSATZGEBIETE****LVG:**

Zur Förderung von Schmutzwasser, vorgefiltertem Abwasser, Regenwasser und Abwasser mit gelösten Feststoffen in Industrieanlagen.

LDG:

Zur Förderung von Regenwasser, zur Entwässerung von Kellerräumen, Schächten und Tanks.

LVX:

Mit offenem Laufrad zur Förderung von Abwasser mit Feststoffen.

**ПРИМЕНЕНИЕ****Электронасос LVG:**

Особенно подходит для удаления сточных вод при наличии в них взвеси, для отвода канализационных, дождевых, грязевых и осадочных, а также промышленных сточных вод.

Электронасос LDG:

Особенно подходит для дренажа сливов от дождевых вод, осушки подвалов, фундамента, подземных переходов, баков и т.д.

Электронасос LVX:




Особенно подходит для удаления сточных вод с присутствием в них взвеси благодаря наличию рабочего колеса открытого заднего типа.






Elettropompe sommergibili serie light
Submersible electric pumps light series
Electropompe submersible série light
Tauchmotorpumpe light Series
Bombas sumergibles serie light
Погружные электронасосы серии Light

Q = CAPACITY													
l/min	20	50	100	150	200	250	300	350	400	450	500	550	600
m³/h	1,2	3	6	9	12	15	18	21	24	27	30	33	36
H = HEAD (m)													
LVG-06T0-32 LVG-06MB1-32	7	6,2	5	3,7	2	0	-	-	-	-	-	-	-
LVG-09T0-32 LVG-09MB1-32	10,4	9	7,4	6,5	5,4	3	0,4	-	-	-	-	-	-
LVG-09T0-50 LVG-09MB1-50	7,3	7,1	6,6	6	5,8	5	4	3,2	2,4	1,6	1	0	-
Q = CAPACITY													
l/min	20	50	100	150	200	250	300	350	400	500	600	700	800
m³/h	1,2	3	6	9	12	15	18	21	24	30	36	42	48
H = HEAD (m)													
LVG-11T0-50 LVG-11MB1-50	11,6	11	10,5	10	8,7	7,5	6,6	5,6	4,5	2,5	0	-	-
LVG-15T0-50 LVG-15MB1-50	13,4	13,2	13	12,6	12	11,5	10,8	10,2	9,2	6,8	4	2,5	0
LVG-20T0-50	18,8	18,5	18,2	17,6	17,2	16,5	15,8	15	13,8	11,2	8,5	5,5	2
Q = CAPACITY													
l/min	20	50	100	150	200	250	300	350	400	450	500	550	600
m³/h	1,2	3	6	9	12	15	18	21	24	27	30	33	36
H = HEAD (m)													
LVX-06T0-40 LVX-06MB1-40	8	6	4,7	3	1,5	0	-	-	-	-	-	-	-
LVX-09T0-40 LVX-09MB1-40	11,5	10	8	6	4,2	2	0	-	-	-	-	-	-
LVX-11T0-50 LVX-11MB1-50	10,8	10,5	10,2	9,4	8,6	7,8	7	6,2	5,3	4,5	3,5	2,6	2
Q = CAPACITY													
l/min	20	50	100	150	200	250	300	350	400	450	500	550	600
m³/h	1,2	3	6	9	12	15	18	21	24	27	30	33	36
H = HEAD (m)													
LDG-04T0-32 LDG-04MB1-32	10,5	9	8	6	4	0	-	-	-	-	-	-	-
LDG-07T0-32 LDG-07MB1-32	17	14,5	13	10,5	8,5	6	4	0	-	-	-	-	-
LDG-11T0-50 LDG-11MB1-50	10,8	10,5	10	7,6	6,8	6	5	4	2	1,4	0,8	0	-

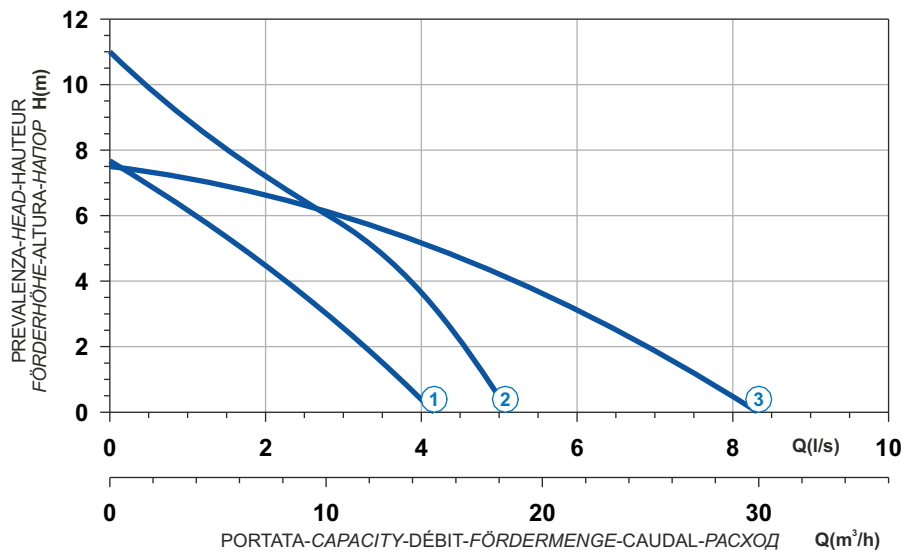
Le schede tecniche sono disponibili al sito www.faggiolatipumps.com
 Technical data sheets are available on our web site www.faggiolatipumps.com
 Les fiches techniques sont disponibles sur notre site web www.faggiolatipumps.com
 Technische Datenblätter finden Sie auf unserer Internetseite www.faggiolatipumps.com
 Las hojas de datos técnicas están disponibles en nuestro web site www.faggiolatipumps.com
 Технические спецификации имеются на Интернет-сайте www.faggiolatipumps.com

 Acciaio inox e ghisa
 Acier inoxydable et fonte
 Acero inox y hierro fundido

 Stainless steel and cast iron
 Edelstahl und Grauguss
 Нержавеющая сталь и чугун

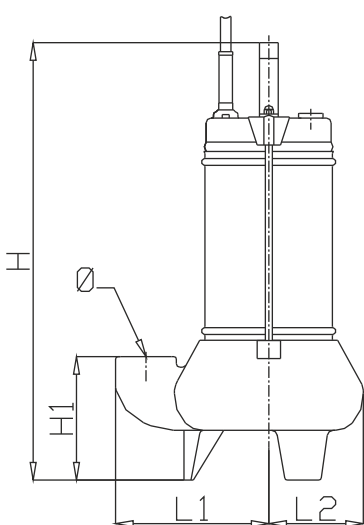


Curva caratteristica - Performance curve - Courbe caractéristique
Kennlinie - Curva característica - Характеристическая кривая

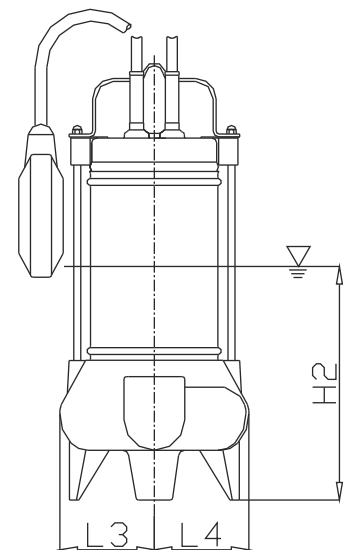
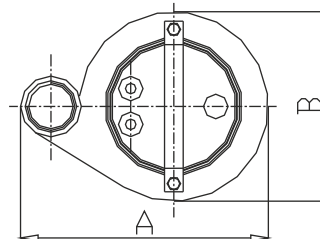


Curve N°	Code	Type	MOTOR				Free passage (mm)	Discharge	Weight (Kg)
			Power supply	R.P.M.	Rated power P2 (kW)	Rated current I (A)			
1	8002334	LVG-06MB1-32	1ph 230V 50Hz	2850	0,58	3,5	35	1"1/4	10,5
2	8009376	LVG-09MB1-32	1ph 230V 50Hz	2850	0,9	5,2	30	1"1/4	12,5
3	8004930	LVG-09MB1-50	1ph 230V 50Hz	2850	0,9	5,2	40	2"	14




Dimensioni - Dimensions - Dimensions - Abmessungen - Dimensiones - Габариты (mm)






▽ LIVELLO MINIMO DI SOMMERSIBILITÀ
 MINIMUM SUBMERSIBLE LEVEL
 NIVEAU MINIMUM D'IMMERSION
 MINDESTWASSERSTAND
 NIVEL SUMERGIBLE MÍNIMO
 МИНИМАЛЬНАЯ ГЛУБИНА ПОГРУЖЕНИЯ

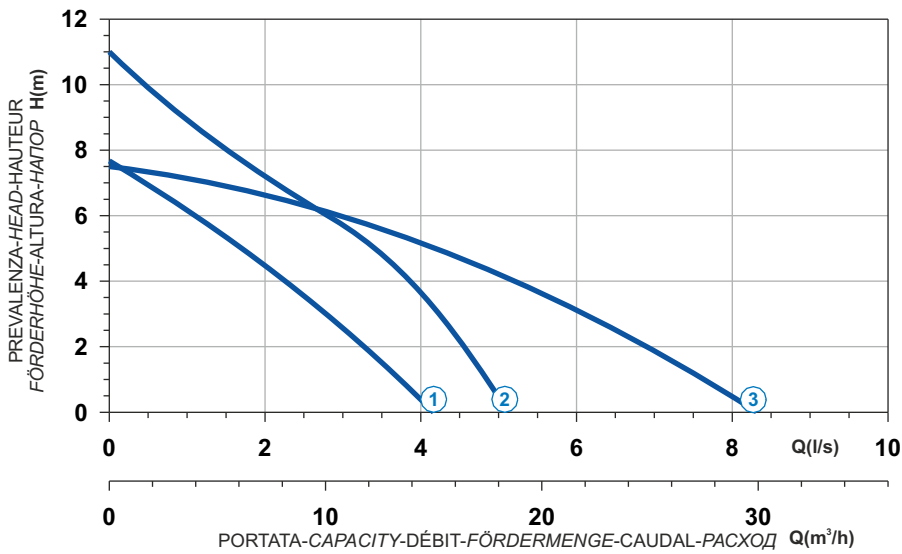


Curve	Code	Type	H	H1	H2	A	B	Ø	L1	L2	L3	L4
1	8002334	LVG-06MB1-32	370	105	200	213	160	1"1/4	133	80	80	80
2	8009376	LVG-09MB1-32	410	105	215	213	160	1"1/4	133	80	80	80
3	8004930	LVG-09MB1-50	430	120	225	270	190	2"	175	95	95	95

 Acciaio inox e ghisa
 Acier inoxydable et fonte
 Acero inox y hierro fundido

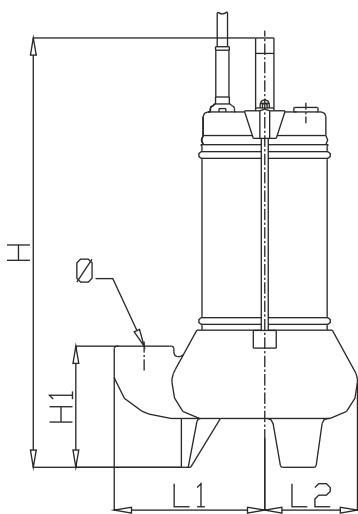
 Stainless steel and cast iron
 Edelstahl und Grauguss
 Нержавеющая сталь и чугун


**Curva caratteristica - Performance curve - Courbe caractéristique
Kennlinie - Curva característica - Характеристическая кривая**

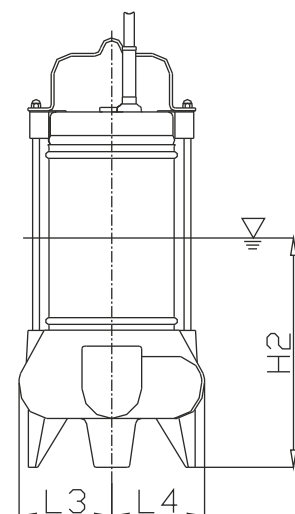
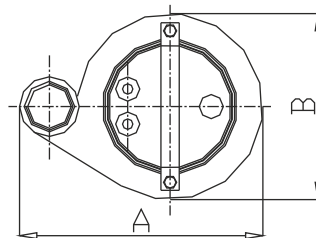


Curve N°	Code	Type	MOTOR				Free passage (mm)	Discharge	Weight (Kg)
			Power supply	R.P.M.	Rated power P2 (kW)	Rated current I (A)			
1	8004807	LVG-06T0-32	3ph 400V 50Hz	2850	0,58	1,1	35	1"1/4	10,5
2	8002322	LVG-09T0-32	3ph 400V 50Hz	2850	0,9	1,8	30	1"1/4	12,5
3	8000704	LVG-09T0-50	3ph 400V 50Hz	2850	0,9	1,8	40	2"	14




Dimensioni - Dimensions - Dimensions - Abmessungen - Dimensiones - Габариты (mm)






 LIVELLO MINIMO DI SOMMERSIBILITÀ
 MINIMUM SUBMERSIBLE LEVEL
 NIVEAU MINIMUM D'IMMERSION
 MINDESTWASSERSTAND
 NIVEL SUMERGIBLE MÍNIMO
 МИНИМАЛЬНАЯ ГЛУБИНА ПОГРУЖЕНИЯ



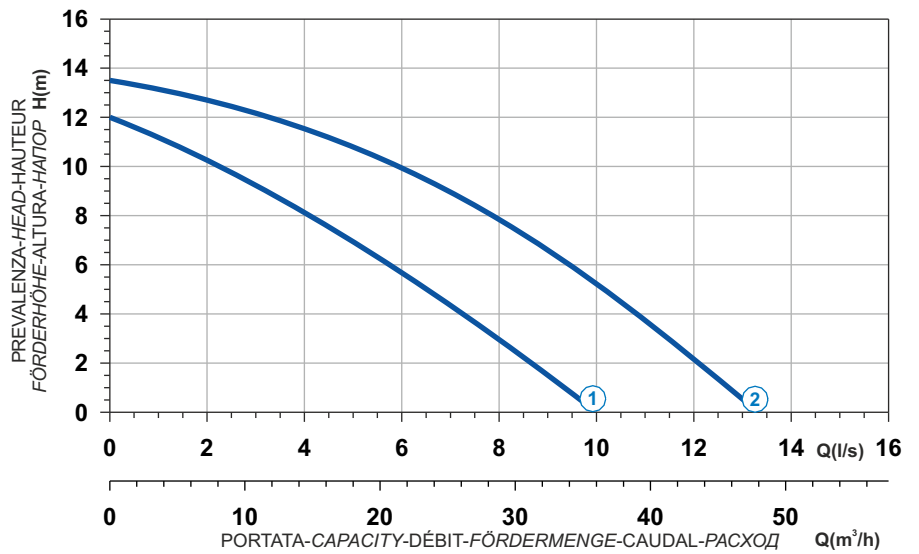
Curve	Code	Type	H	H1	H2	A	B	Ø	L1	L2	L3	L4
1	8004807	LVG-06T0-32	370	105	200	213	160	1"1/4	133	80	80	80
2	8002322	LVG-09T0-32	410	105	215	213	160	1"1/4	133	80	80	80
3	8000704	LVG-09T0-50	430	120	225	270	190	2"	175	95	95	95

 Acciaio inox e ghisa
 Acier inoxydable et fonte
 Acero inox y hierro fundido

 Stainless steel and cast iron
 Edelstahl und Grauguss
 Нержавеющая сталь и чугун

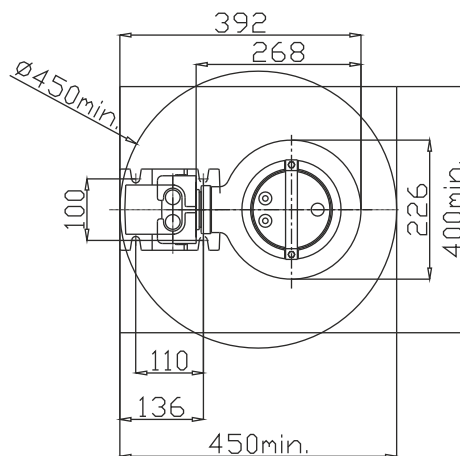
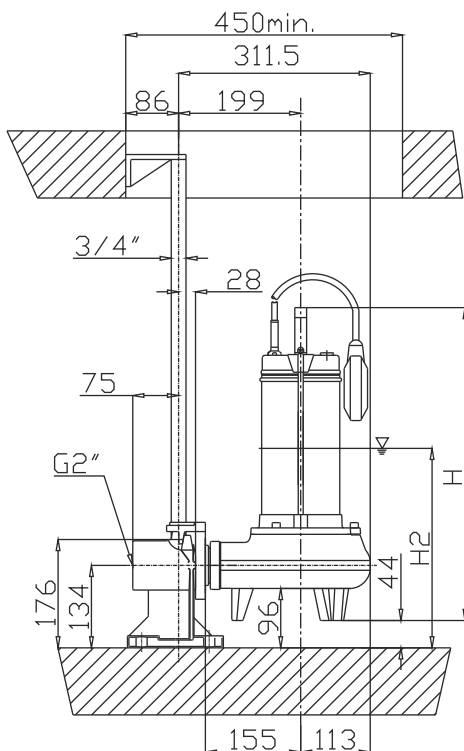


Curva caratteristica - Performance curve - Courbe caractéristique
Kennlinie - Curva característica - Характеристическая кривая

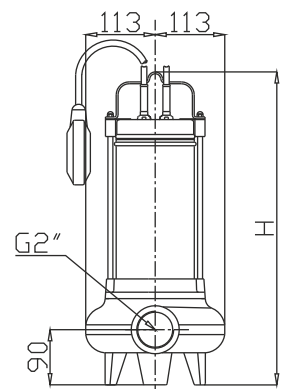


Curve N°	Code	Type	MOTOR				Free passage (mm)	Discharge	Weight (Kg)
			Power supply	R.P.M.	Rated power P2 (kW)	Rated current I (A)			
1	8001845	LVG-11MB1-50	1ph 230V 50Hz	2850	1,1	7,5	50	2"	20
2	8002336	LVG-15MB1-50	1ph 230V 50Hz	2850	1,5	10,5	50	2"	22




Dimensioni - Dimensions - Dimensions - Abmessungen - Dimensiones - Габариты (mm)






▽ LIVELLO MINIMO DI SOMMERSIBILITÀ
 MINIMUM SUBMERSIBLE LEVEL
 NIVEAU MINIMUM D'IMMERSION
 MINDESTWASSERSTAND
 NIVEL SUMERGIBLE MÍNIMO
 МИНИМАЛЬНАЯ ГЛУБИНА ПОГРУЖЕНИЯ

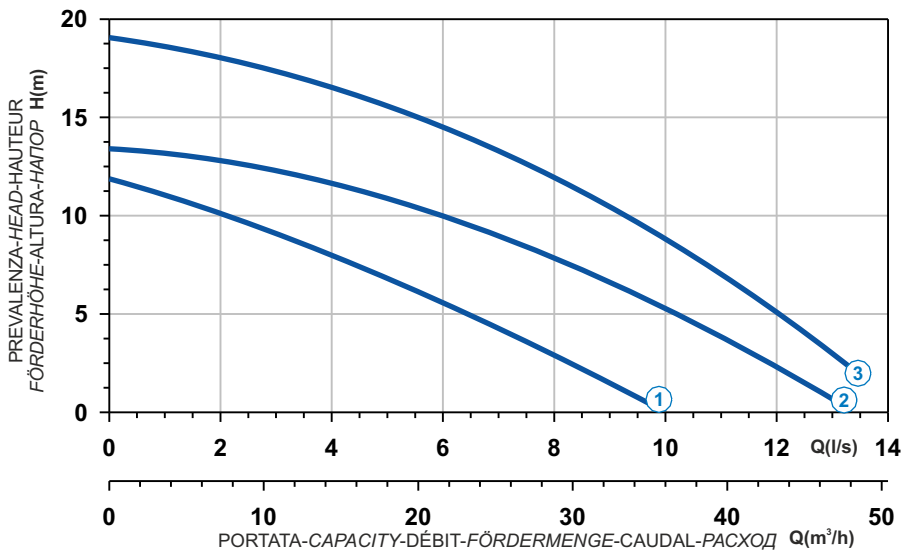


Curve	Code	Type	H	H2
1	8001845	LVG-11MB1-50	480	314
2	8002336	LVG-15MB1-50	500	324

 Acciaio inox e ghisa
 Acier inoxydable et fonte
 Acero inox y hierro fundido

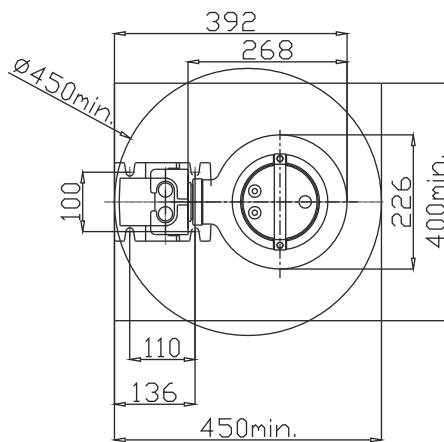
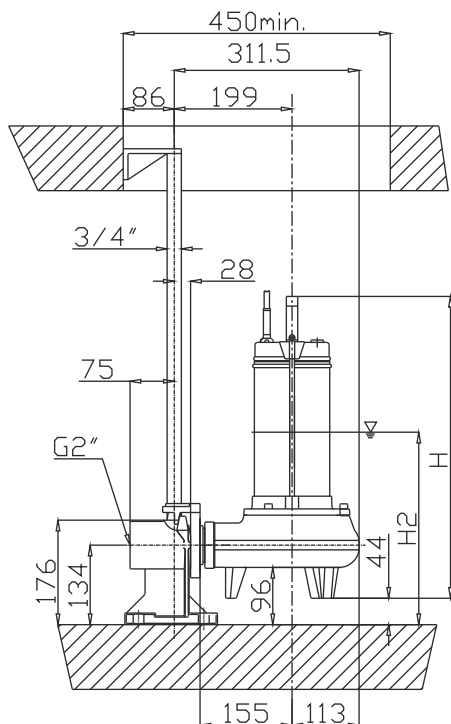
 Stainless steel and cast iron
 Edelstahl und Grauguss
 Нержавеющая сталь и чугун

**Curva caratteristica - Performance curve - Courbe caractéristique
Kennlinie - Curva característica - Характеристическая кривая**

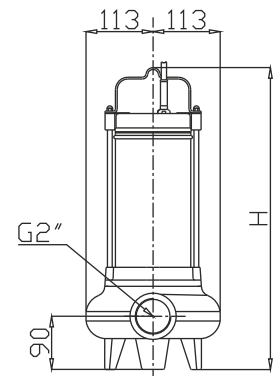


Curve N°	Code	Type	MOTOR				Free passage (mm)	Discharge	Weight (Kg)
			Power supply	R.P.M.	Rated power P2 (kW)	Rated current I (A)			
1	8001812	LVG-11T0-50	3ph 400V 50Hz	2850	1,1	3,2	50	2"	20
2	8004257	LVG-15T0-50	3ph 400V 50Hz	2850	1,5	3,4	50	2"	22
3	8002182	LVG-20T0-50	3ph 400V 50Hz	2850	2,2	5,6	45	2"	25




Dimensioni - Dimensions - Dimensions - Abmessungen - Dimensiones - Габариты (mm)






▽ LIVELLO MINIMO DI SOMMERGIBILITÀ
 MINIMUM SUBMERSIBLE LEVEL
 NIVEAU MINIMUM D'IMMERSION
 MINDESTWASSERSTAND
 NIVEL SUMERGIBLE MÍNIMO
 МИНИМАЛЬНАЯ ГЛУБИНА ПОГРУЖЕНИЯ



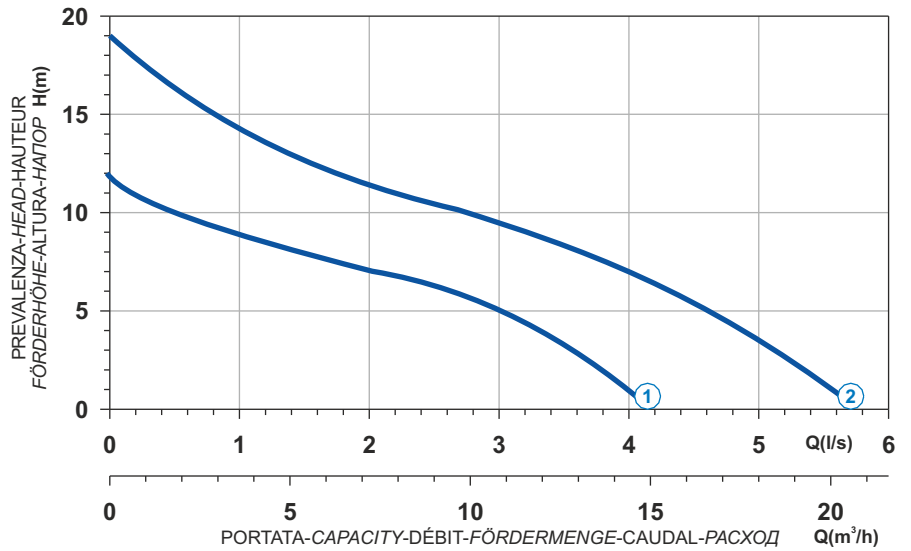
Curve	Code	Type	H	H2
1	8001812	LVG-11T0-50	460	304
2	8004257	LVG-15T0-50	480	314
3	8002182	LVG-20T0-50	500	324

 Acciaio inox e plastica nylon
 Acier inox. et plastique nylon
 Acero inox y plastico nylon

 Stainless steel and cast iron
 Edelstahl und Grauguss
 Нержавеющая сталь и чугун

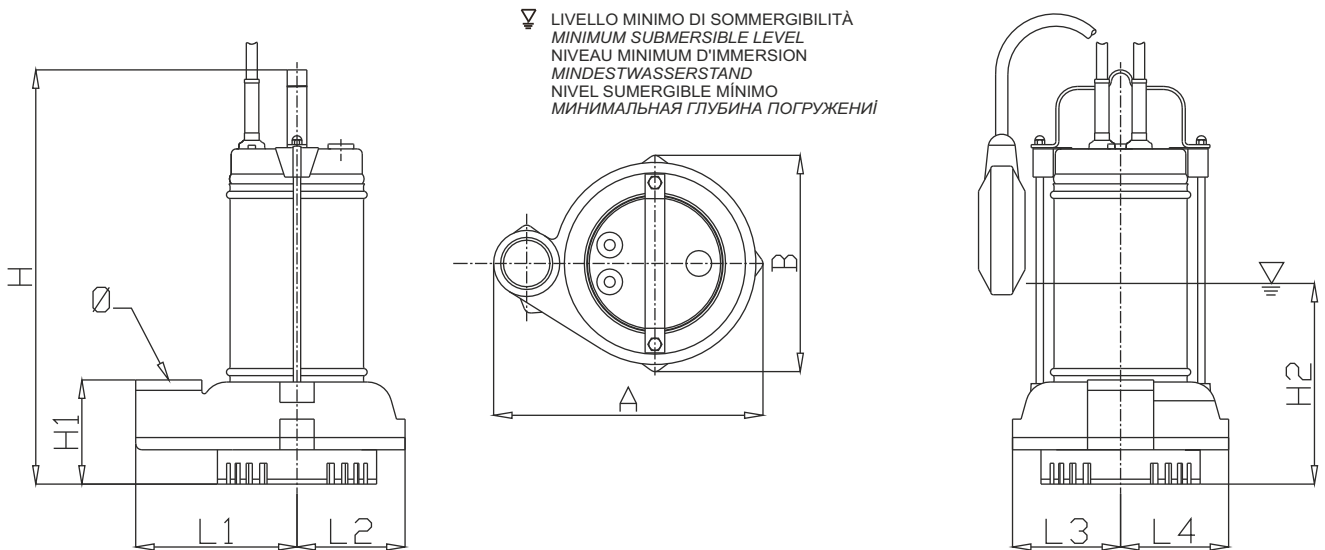


Curva caratteristica - Performance curve - Courbe caractéristique
Kennlinie - Curva característica - Характеристическая кривая









Curve N°	Code	Type	MOTOR				Free passage (mm)	Discharge	Weight (Kg)
			Power supply	R.P.M.	Rated power P2 (kW)	Rated current I (A)			
1	8001323	LDG-04MB1-32	1ph 230V 50Hz	2850	0,58	3,5	10	1"1/4	7
2	8002449	LDG-07MB1-32	1ph 230V 50Hz	2850	0,9	5,2	10	1"1/4	9

Dimensioni - Dimensions - Dimensions - Abmessungen - Dimensiones - Габариты (mm)

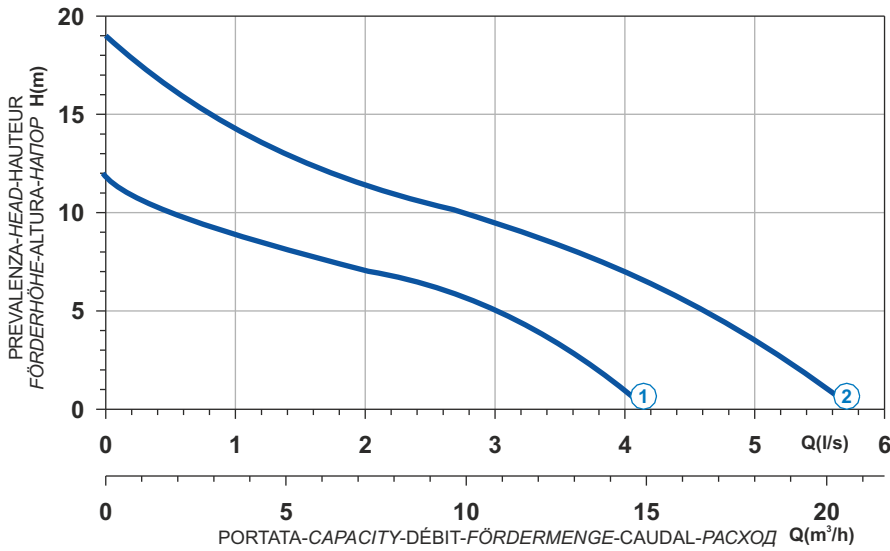


Curve	Code	Type	H	H1	H2	A	B	Ø	L1	L2	L3	L4
1	8001323	LDG-04MB1-32	340	85	155	220	180	1"1/4	130	90	90	90
2	8002449	LDG-07MB1-32	375	85	155	220	180	1"1/4	130	90	90	90

 Acciaio inox e plastica nylon
 Acier inox. et plastique nylon
 Acero inox y plastico nylon

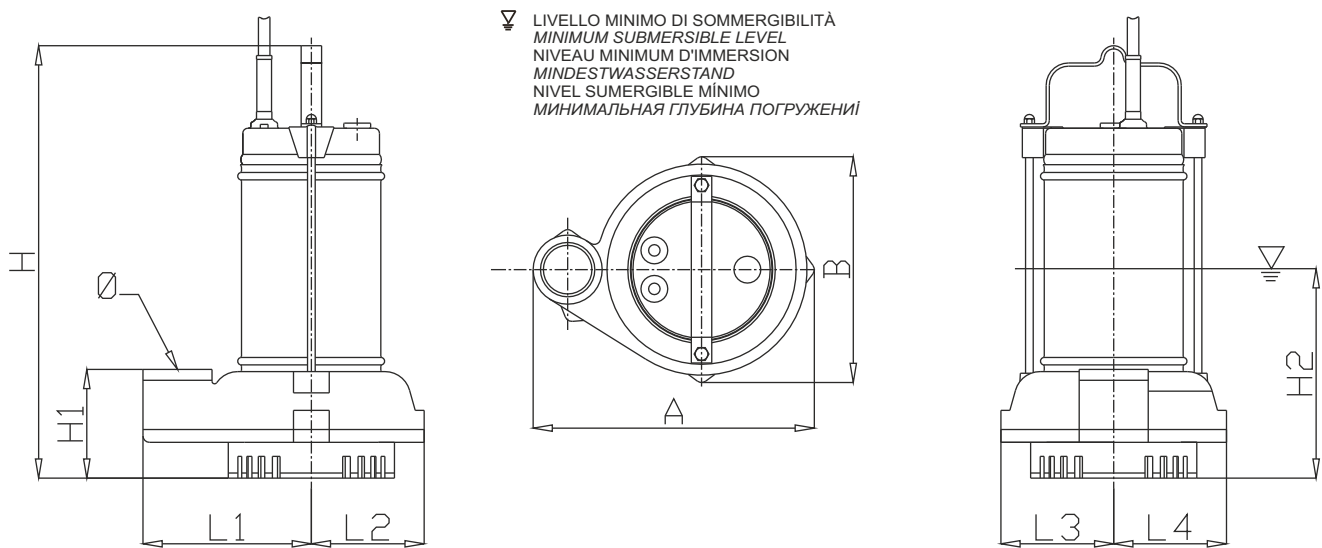
 Stainless steel and cast iron
 Edelstahl und Grauguss
 Нержавеющая сталь и чугун

**Curva caratteristica - Performance curve - Courbe caractéristique
Kennlinie - Curva característica - Характеристическая кривая**









Curve N°	Code	Type	MOTOR				Free passage (mm)	Discharge	Weight (Kg)
			Power supply	R.P.M.	Rated power P2 (kW)	Rated current I (A)			
1	8001778	LDG-04T0-32	3ph 400V 50Hz	2850	0,58	1,1	10	1"1/4	7
2	8008658	LDG-07T0-32	3ph 400V 50Hz	2850	0,9	1,8	10	1"1/4	9

Dimensioni - Dimensions - Dimensions - Abmessungen - Dimensiones - Габариты (mm)

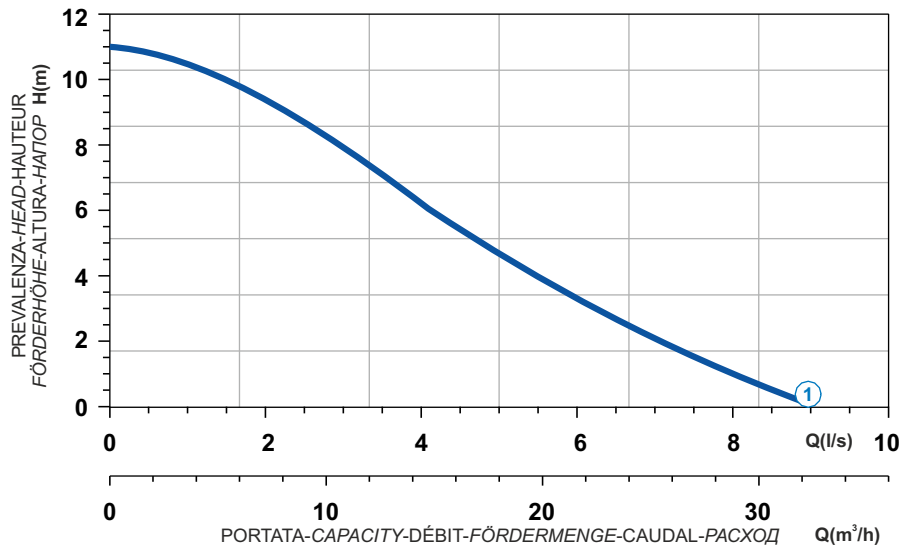


Curve	Code	Type	H	H1	H2	A	B	Ø	L1	L2	L3	L4
1	8001778	LDG-04T0-32	340	85	155	220	180	1"1/4	130	90	90	90
2	8008658	LDG-07T0-32	375	85	155	220	180	1"1/4	130	90	90	90

 Acciaio inox e ghisa
 Acier inoxydable et fonte
 Acero inox y hierro fundido

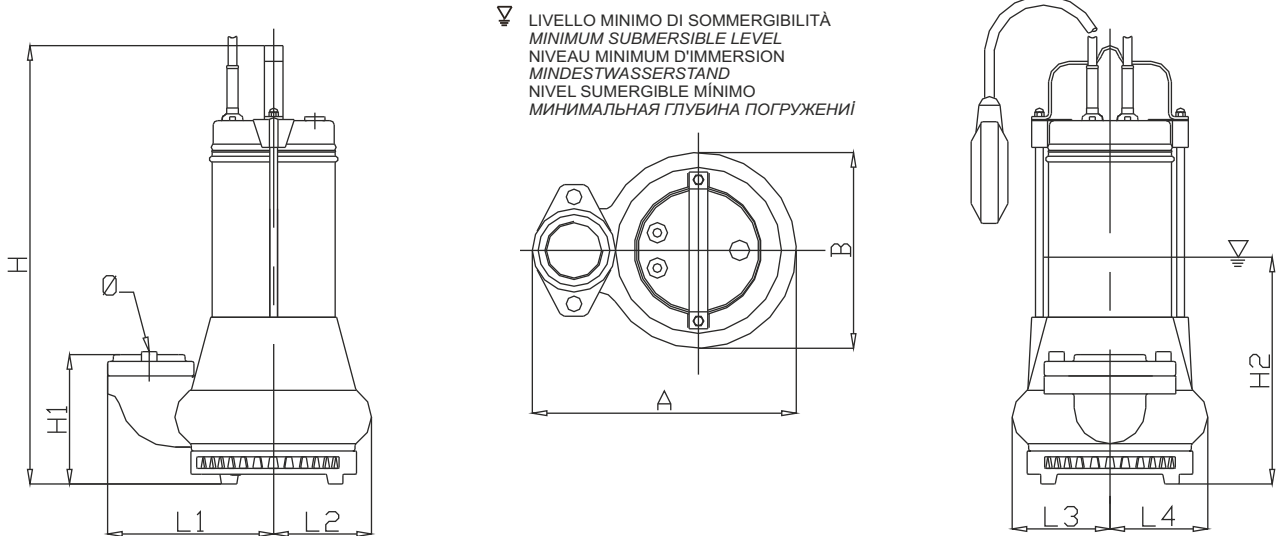
 Stainless steel and cast iron
 Edelstahl und Grauguss
 Нержавеющая сталь и чугун

Curva caratteristica - Performance curve - Courbe caractéristique
 Kennlinie - Curva característica - Характеристическая кривая









Curve N°	Code	Type	MOTOR				Free passage (mm)	Discharge	Weight (Kg)
			Power supply	R.P.M.	Rated power P2 (kW)	Rated current I (A)			
1	8001149	LDG-11MB1-50	1ph 230V 50Hz	2850	1,1	7,5	10	2"	24,5

Dimensioni - Dimensions - Dimensions - Abmessungen - Dimensiones - Габариты (mm)

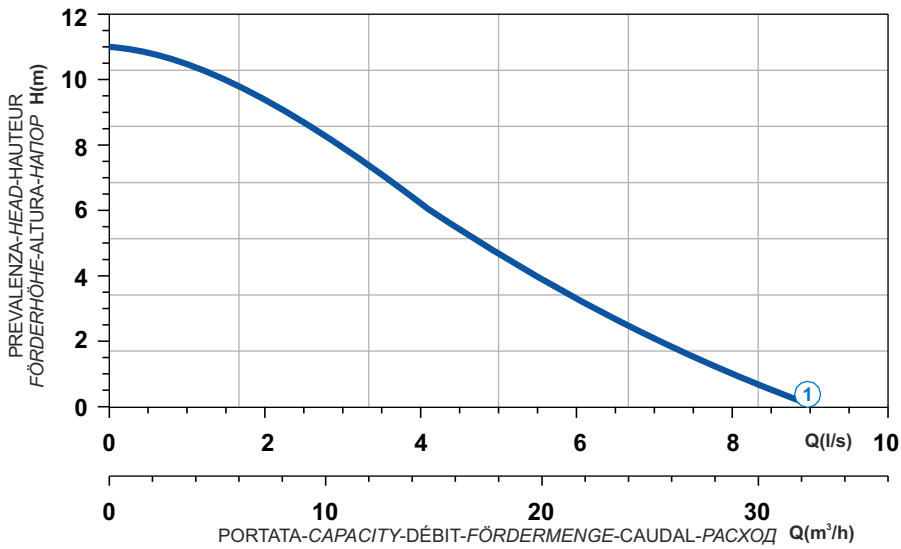


Curve	Code	Type	H	H1	H2	A	B	Ø	L1	L2	L3	L4
1	8001149	LDG-11MB1-50	440	134	230	275	202	2"	174	101	101	101

 Acciaio inox e ghisa
 Acier inoxydable et fonte
 Acero inox y hierro fundido

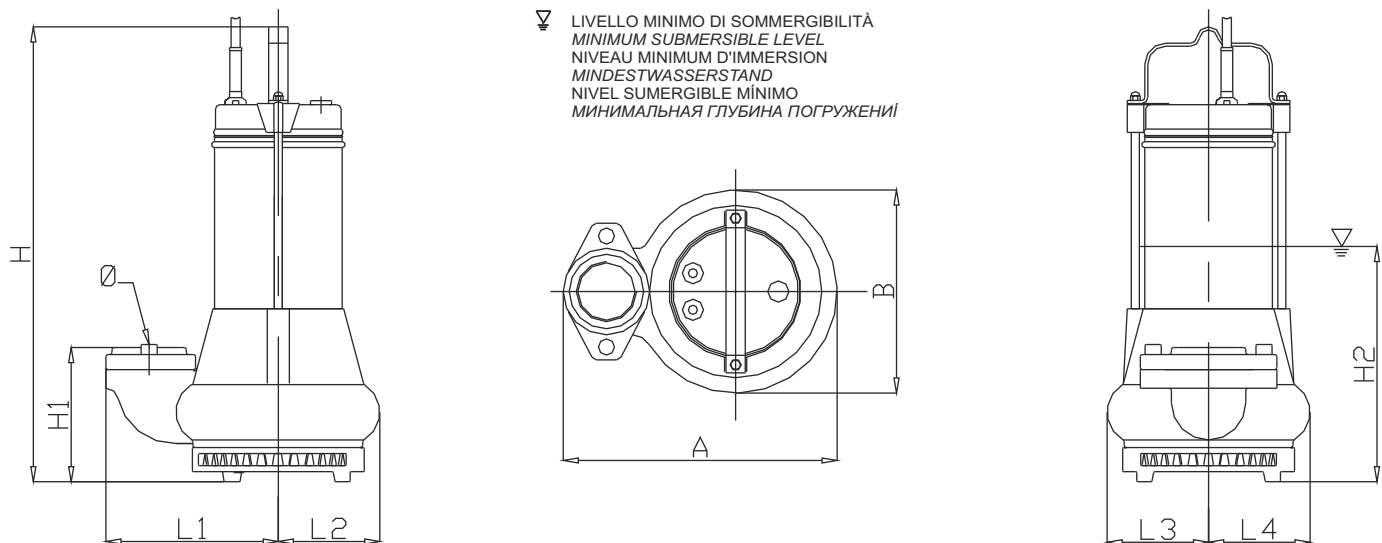
 Stainless steel and cast iron
 Edelstahl und Grauguss
 Нержавеющая сталь и чугун

**Curva caratteristica - Performance curve - Courbe caractéristique
Kennlinie - Curva característica - Характеристическая кривая**



Curve N°	Code	Type	MOTOR				Free passage (mm)	Discharge	Weight (Kg)
			Power supply	R.P.M.	Rated power P2 (kW)	Rated current I (A)			
1	8009143	LDG-11T0-50	3ph 400V 50Hz	2850	1,1	3,2	10	2"	24,5

Dimensioni - Dimensions - Dimensions - Abmessungen - Dimensiones - Габариты (mm)



Curve	Code	Type	H	H1	H2	A	B	Ø	L1	L2	L3	L4
1	8009143	LDG-11T0-50	420	134	220	275	202	2"	174	101	101	101

 Acciaio inox

 Acier inoxydable

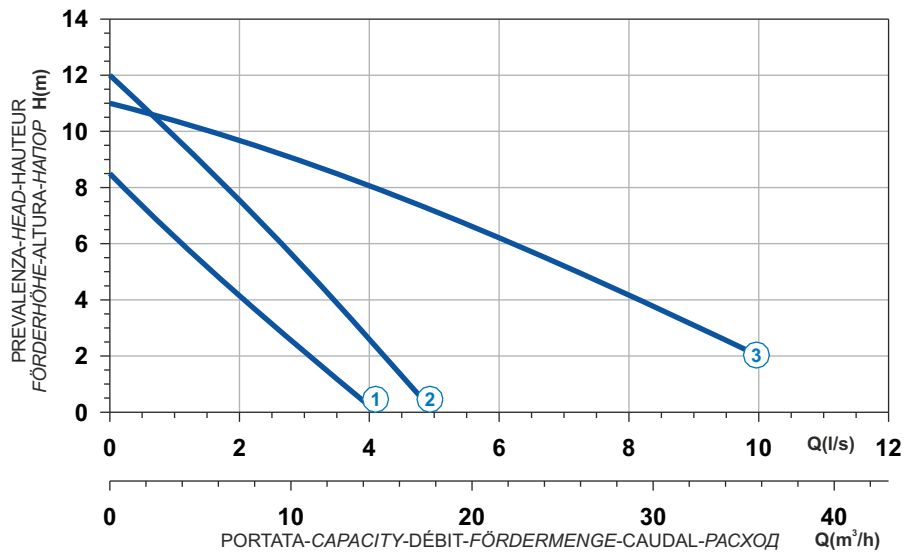
 Acero inox

 Stainless steel

 Edelstahl

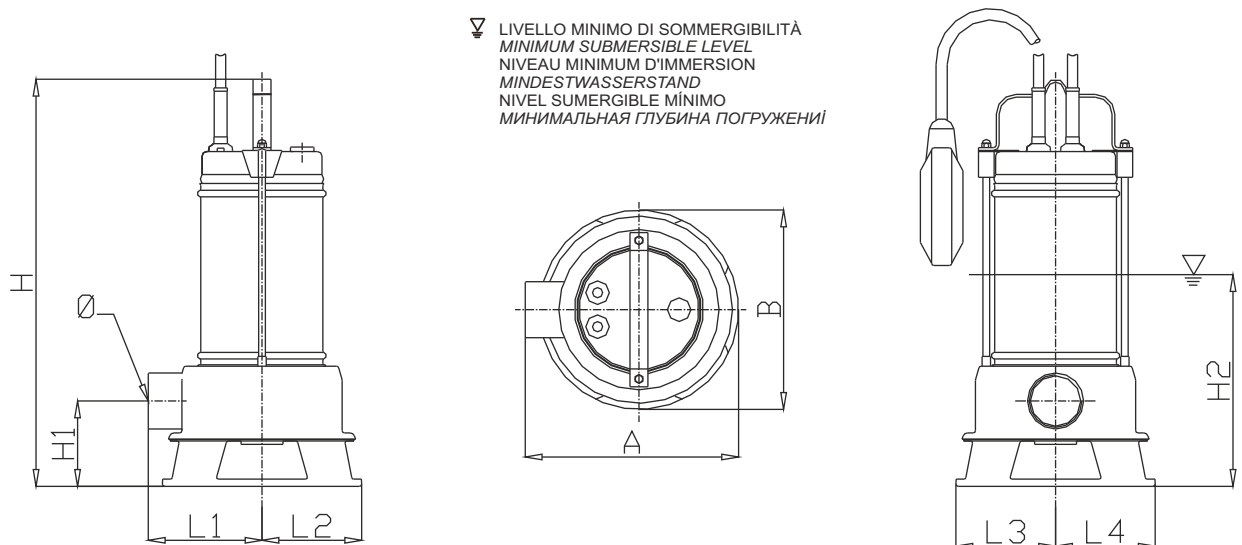
 Нержавеющая сталь

Curva caratteristica - Performance curve - Courbe caractéristique
Kennlinie - Curva característica - Характеристическая кривая









Curve N°	Code	Type	MOTOR				Free passage (mm)	Discharge	Weight (Kg)
			Power supply	R.P.M.	Rated power P2 (kW)	Rated current I (A)			
1	8008029	LVX-06MB1-40	1ph 230V 50Hz	2850	0,58	3,5	35	1"1/2	7
2	8008031	LVX-09MB1-40	1ph 230V 50Hz	2850	0,9	5,2	30	1"1/2	8,5
3	8008201	LVX-11MB1-50	1ph 230V 50Hz	2850	1,1	7,5	50	2"	16

Dimensioni - Dimensions - Dimensions - Abmessungen - Dimensiones - Габариты (mm)

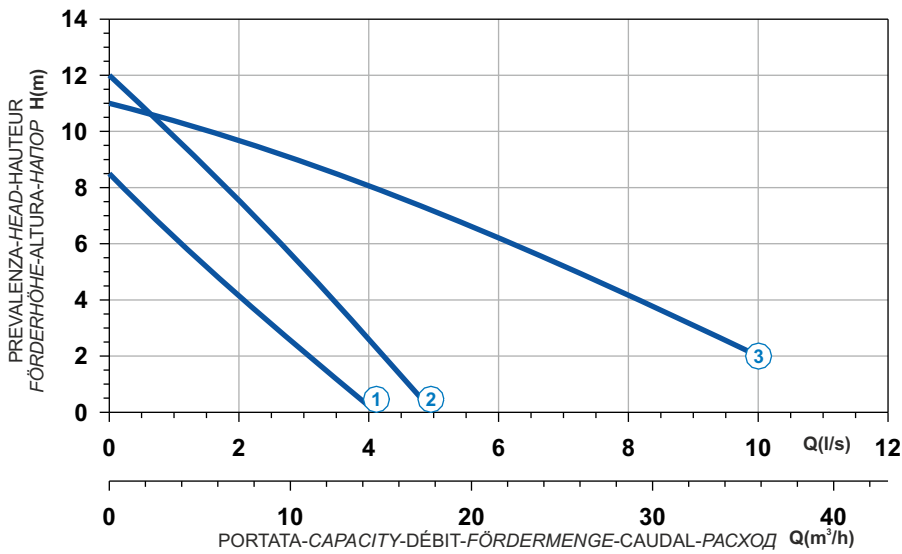


Curve	Code	Type	H	H1	H2	A	B	Ø	L1	L2	L3	L4
1	8008029	LVX-06MB1-40	365	76	195	195	180	1"1/2	105	95	95	95
2	8008031	LVX-09MB1-40	405	76	215	195	180	1"1/2	105	95	95	95
3	8008201	LVX-11MB1-50	480	107	265	230	220	2"	120	110	110	110

 Acciaio inox
 Acier inoxydable
 Acero inox

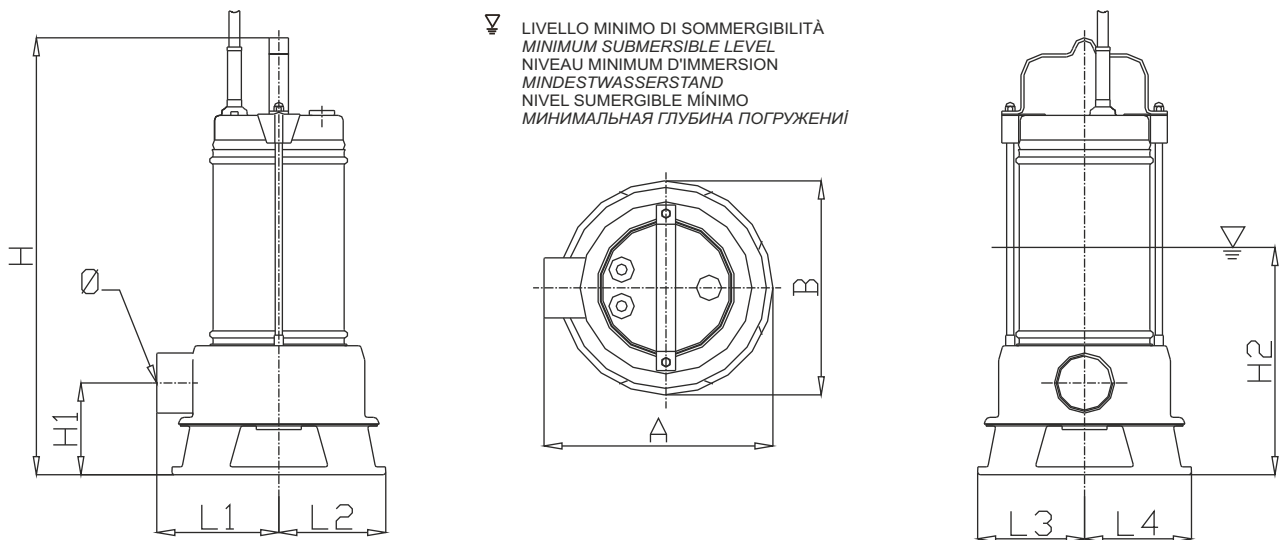
 Stainless steel
 Edelstahl
 Нержавеющая сталь

**Curva caratteristica - Performance curve - Courbe caractéristique
Kennlinie - Curva característica - Характеристическая кривая**



Curve N°	Code	Type	MOTOR				Free passage (mm)	Discharge	Weight (Kg)
			Power supply	R.P.M.	Rated power P2 (kW)	Rated current I (A)			
1	8002754	LVX-06T0-40	3ph 400V 50Hz	2850	0,58	1,1	35	1"1/2	7
2	8000876	LVX-09T0-40	3ph 400V 50Hz	2850	0,9	1,8	30	1"1/2	8,5
3	8001631	LVX-11T0-50	3ph 400V 50Hz	2850	1,1	3,2	50	2"	14

Dimensioni - Dimensions - Dimensions - Abmessungen - Dimensiones - Габариты (mm)



▽ LIVELLO MINIMO DI SOMMERSIBILITÀ
 MINIMUM SUBMERSIBLE LEVEL
 NIVEAU MINIMUM D'IMMERSION
 MINDESTWASSERSTAND
 NIVEL SUMERGIBLE MINIMO
 МИНИМАЛЬНАЯ ГЛУБИНА ПОГРУЖЕНИЯ

Curve	Code	Type	H	H1	H2	A	B	Ø	L1	L2	L3	L4
1	8002754	LVX-06T0-40	365	76	195	195	180	1"1/2	105	95	95	95
2	8000876	LVX-09T0-40	405	76	215	195	180	1"1/2	105	95	95	95
3	8001631	LVX-11T0-50	480	107	265	230	220	2"	120	110	110	110